

Customer :

customer

Customer part :

customer part

Comment :

Comment

S1=3.43

S2=18.97

Tmax=430

Tp S2=469.0

PI=0.15

HI=506

Sample =754.92

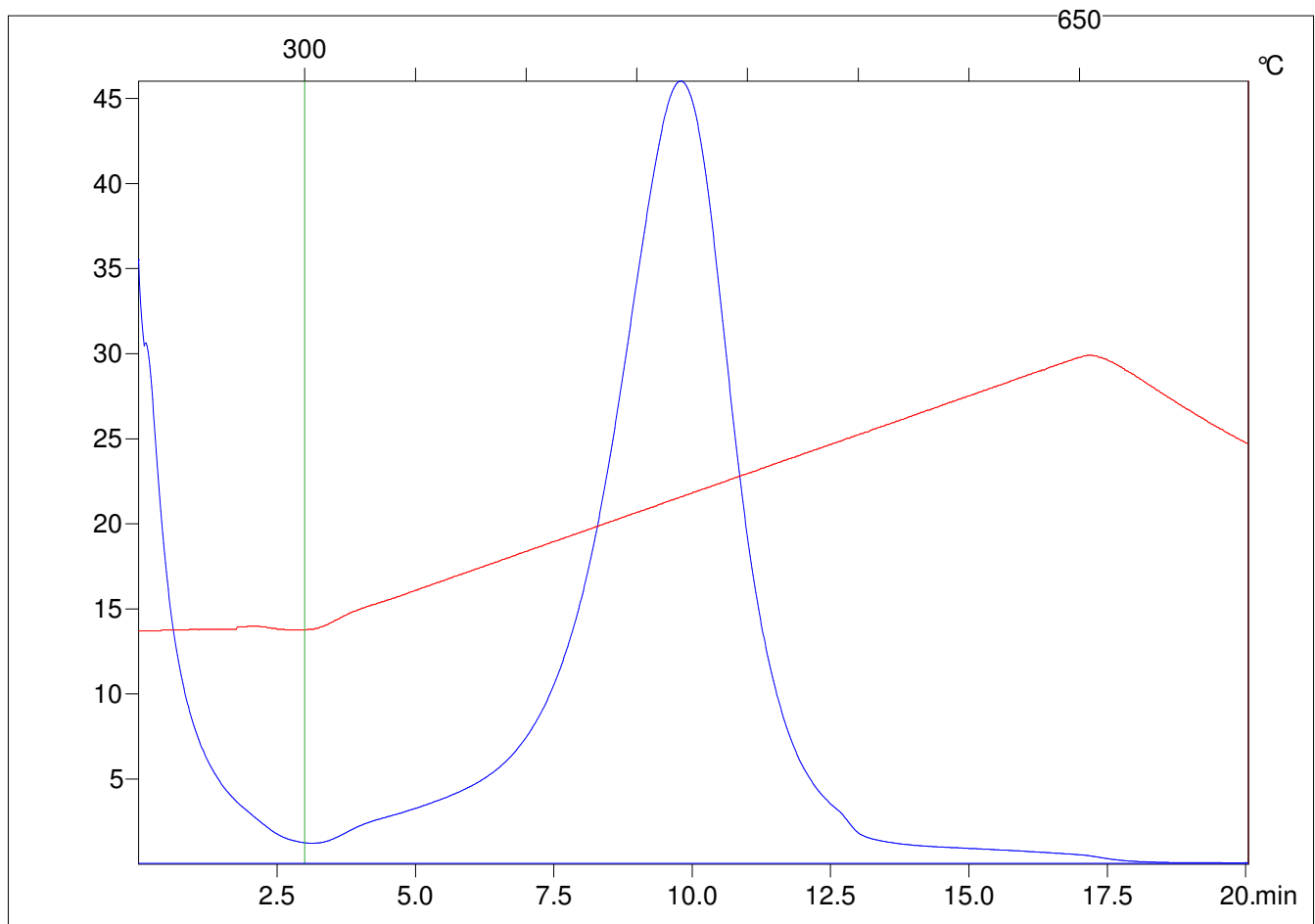
Method =Bulk Rock

Cycle=Basic

KFID(10*9)=1550

Qty =70.0

TOC=3.75



C:\VINC\PK130315\PK006.R00 : FID pyrolysis graphic

State

Pyro Status

Oxi Status